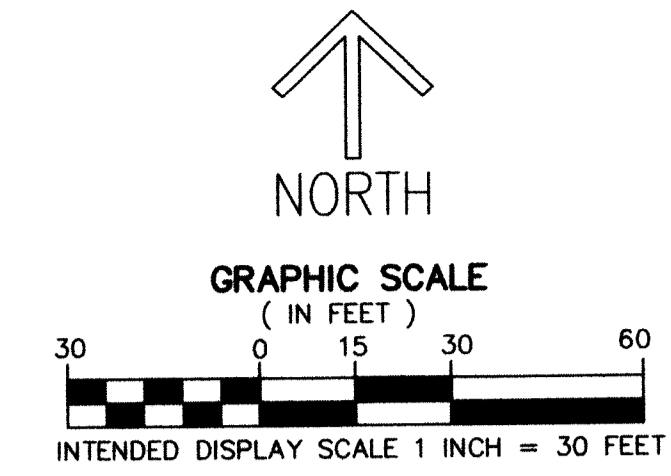


THIS INSTRUMENT PREPARED BY  
DONALD L. TODD  
OF  
**ATLANTIC-CARIBBEAN MAPPING, INC.**  
357 LIANA DR, WEST PALM BEACH, FLORIDA 33415  
(561)964-7884

# RANCHETTE LAKE

A PORTION OF THE NORTHEAST ONE-QUARTER OF  
SECTION 10, TOWNSHIP 44 SOUTH, RANGE 42 EAST, PALM BEACH COUNTY, FLORIDA



**NOTES**  
**COORDINATES, BEARINGS AND DISTANCES**  
COORDINATES SHOWN ARE GRID  
DATUM = NAD 83 (90/98 ADJUSTMENT)  
ZONE = FLORIDA EAST  
LINEAR UNIT = US SURVEY FEET  
COORDINATE SYSTEM 1983 STATE PLANE  
TRANSVERSE MERCATOR PROJECTION  
ALL DISTANCES ARE GROUND, UNLESS OTHERWISE NOTED  
SCALE FACTOR = 1.000032394  
GROUND DISTANCE X SCALE FACTOR = GRID DISTANCE  
BEARINGS AS SHOWN HEREON ARE GRID DATUM,  
NAD 83 (90/98 ADJUSTMENT), FLORIDA EAST ZONE.

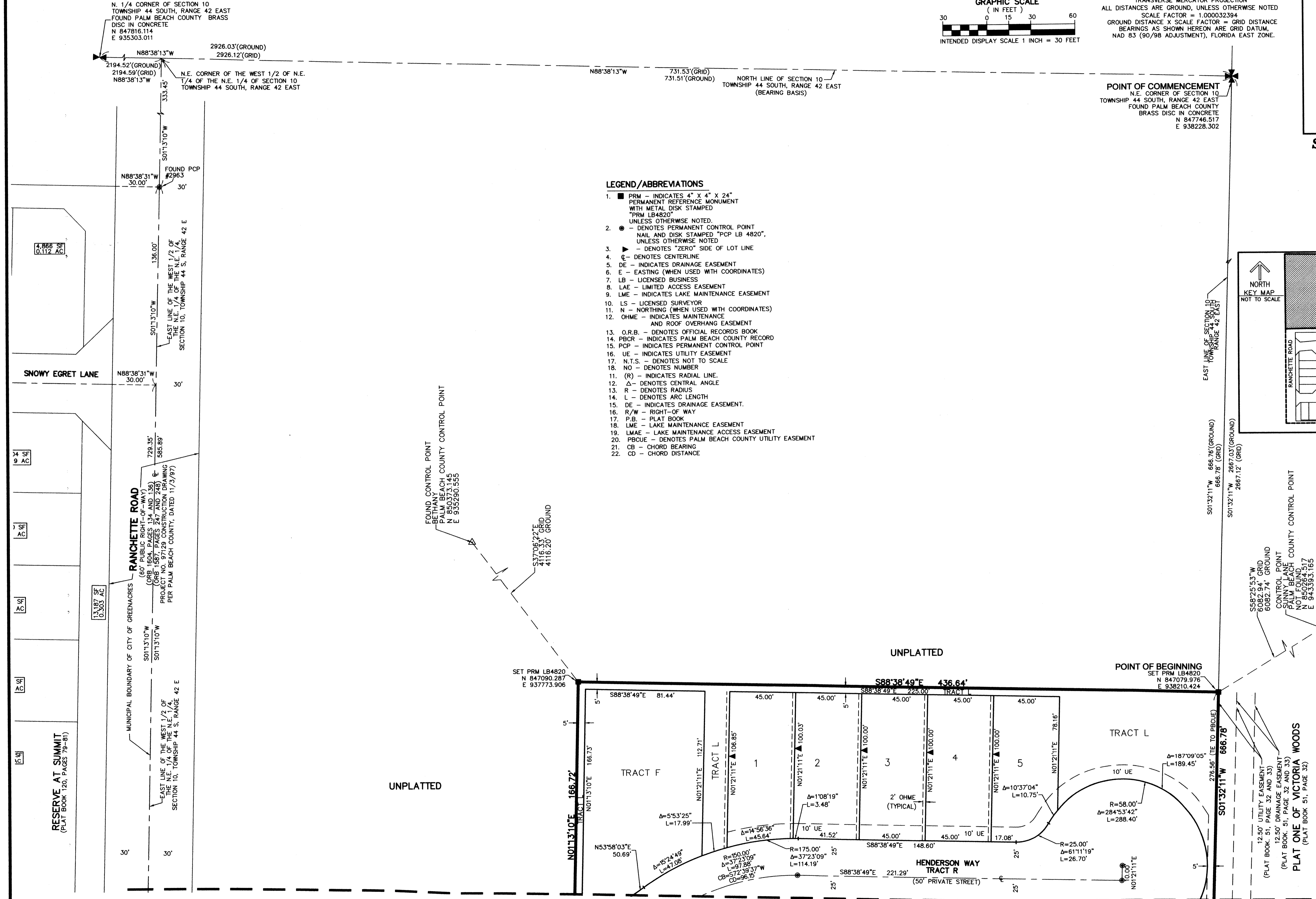
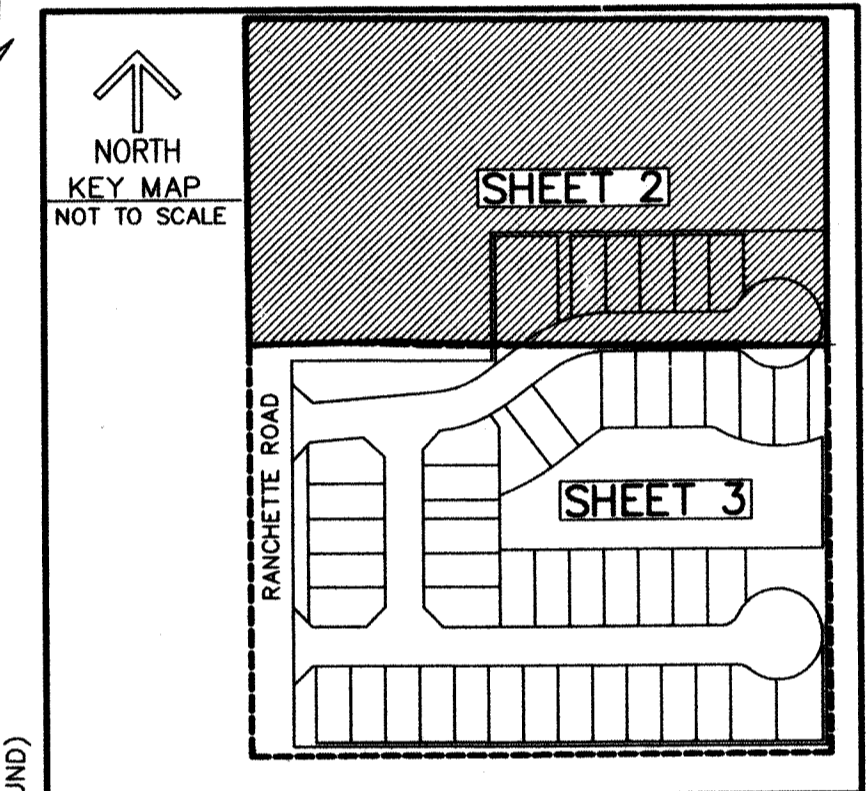
119  
**SHEET 2 OF 3**

N. 1/4 CORNER OF SECTION 10  
TOWNSHIP 44 SOUTH, RANGE 42 EAST  
FOUND PALM BEACH COUNTY BRASS  
DISC IN CONCRETE  
N 847816.114  
E 935303.011

**POINT OF COMMENCEMENT**  
N.E. CORNER OF SECTION 10  
TOWNSHIP 44 SOUTH, RANGE 42 EAST  
FOUND PALM BEACH COUNTY  
BRASS DISC IN CONCRETE  
N 847746.517  
E 938228.302

**LEGEND/ABBREVIATIONS**

1. ■ PRM - INDICATES 4" X 4" X 24" PERMANENT REFERENCE MONUMENT WITH METAL DISK STAMPED "PRM LB4820" UNLESS OTHERWISE NOTED.
2. ● - DENOTES PERMANENT CONTROL POINT NAIL AND DISK STAMPED "PCP LB 4820", UNLESS OTHERWISE NOTED.
3. ▶ - DENOTES "ZERO" SIDE OF LOT LINE
4. ⊕ - DENOTES CENTERLINE
5. DE - INDICATES DRAINAGE EASEMENT
6. E - EASTING (WHEN USED WITH COORDINATES)
7. LB - LICENSED BUSINESS
8. LAE - LIMITED ACCESS EASEMENT
9. LME - INDICATES LAKE MAINTENANCE EASEMENT
10. LS - LICENSED SURVEYOR
11. N - NORTHING (WHEN USED WITH COORDINATES)
12. OHME - INDICATES MAINTENANCE AND ROOF OVERHANG EASEMENT
13. O.R.B. - DENOTES OFFICIAL RECORDS BOOK
14. PBCR - INDICATES PALM BEACH COUNTY RECORD
15. PCP - INDICATES PERMANENT CONTROL POINT
16. UE - INDICATES UTILITY EASEMENT
17. N.T.S. - DENOTES NOT TO SCALE
18. NO - DENOTES NUMBER
19. (R) - INDICATES RADIAL LINE.
12. Δ - DENOTES CENTRAL ANGLE
13. R - DENOTES RADIUS
14. L - DENOTES ARC LENGTH
15. DE - INDICATES DRAINAGE EASEMENT.
16. R/W - RIGHT-OF-WAY
17. P.B. - PLAT BOOK
18. LME - LAKE MAINTENANCE EASEMENT
19. LMAE - LAKE MAINTENANCE ACCESS EASEMENT
20. PBCUE - DENOTES PALM BEACH COUNTY UTILITY EASEMENT
21. CB - CHORD BEARING
22. CD - CHORD DISTANCE



**MATCH LINE SHEET 3 OF 3**

12.50' UTILITY EASEMENT  
(PLAT BOOK 51, PAGE 32 AND 33)  
12.50' DRAINAGE EASEMENT  
(PLAT BOOK 51, PAGE 32 AND 33)  
**PLAT ONE OF VICTORIA WOODS**  
(PLAT BOOK 51, PAGE 32)

**RESERVE AT SUMMIT**  
(PLAT BOOK 120, PAGES 79-81)

**RANCHETTE ROAD**  
(60' PUBLIC RIGHT-OF-WAY)  
(O.R.B. 157, PAGES 174 AND 198)  
PROJECT NO. 97729 CONSTRUCTION DRAWING  
PER PALM BEACH COUNTY, DATED 11/3/97

FOUND CONTROL POINT  
BETHANY LASH COUNTY CONTROL POINT  
PALM BEACH COUNTY  
N 847746.517  
E 935290.555

CONTROL POINT  
PALM BEACH COUNTY CONTROL POINT  
NOT FOUND  
N 850264.517  
E 943393.165